



Zoonoses

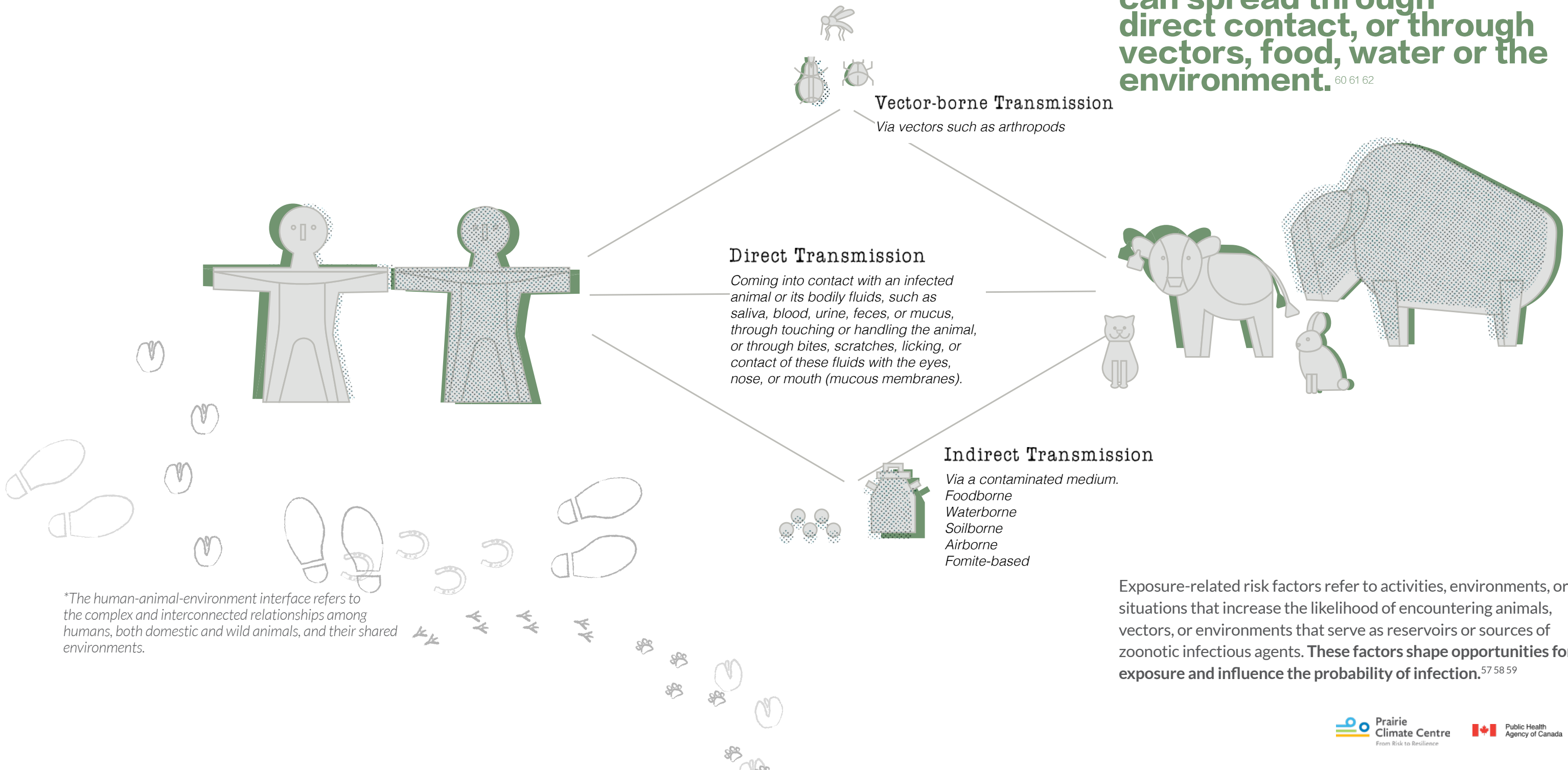
Zoonotic Infectious Diseases (ZIDs)

Diseases that spread between animals and humans, with causal agents being pathogenic microorganisms such as viruses, bacteria, fungi, or parasites.

Modes of Transmission and Exposure Risks

Given the close connections between humans and animals in shared environments across settings such as agriculture, companionship, and natural environments, the **human-animal-environment interface** shapes how exposure and contact occur.

Zoonotic infectious diseases can spread through direct contact, or through vectors, food, water or the environment.^{60 61 62}



*The human-animal-environment interface refers to the complex and interconnected relationships among humans, both domestic and wild animals, and their shared environments.

Exposure-related risk factors refer to activities, environments, or situations that increase the likelihood of encountering animals, vectors, or environments that serve as reservoirs or sources of zoonotic infectious agents. **These factors shape opportunities for exposure and influence the probability of infection.**^{57 58 59}